

Welsch Wind Farm

Open House

Project Name: Welsch Wind Farm

Project Location: The Project is located approximately 13 kilometres (km) northeast of Pincher Creek, Alberta.

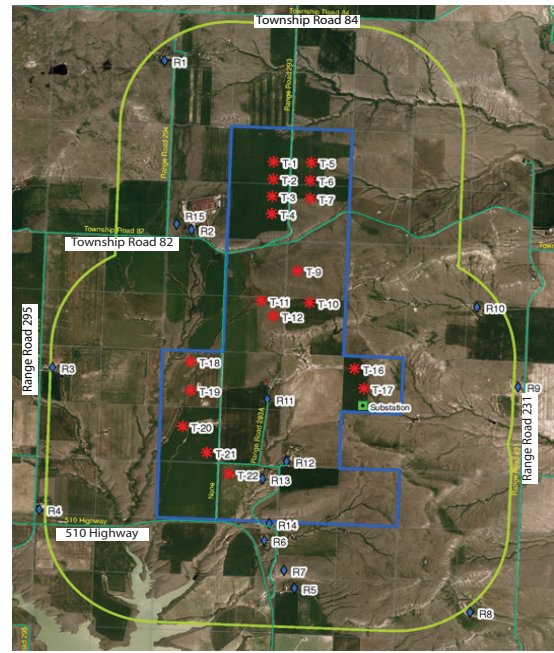
Project Description:

The 69 MW Welsch Wind Farm (the Project) is being developed by Welsch Wind Power Inc. (WWPI) , a wholly owned subsidiary of ENERCON. The Project is located approximately 13 km northeast of Pincher Creek, Alberta and is permitted for 26 turbine locations.

Project Status:

WWPI is currently preparing an application to amend the Alberta Utilities Commission (AUC) Approval No. U2014-445 and Permit and Licence No. U2014-446 to take into consideration a revised configuration and a reduced number of wind turbines for the Project. The current draft layout (see graphic) consists of thirteen (13) ENERCON "E-126 EP4" turbines and five (5) "E-101 E2" turbines. WWPI has conducted a Noise Impact Assessment (NIA), Visual Simulation (VF), and Shadow Flicker (SF) with the proposed layout to ensure noise levels and visual impacts remain at or below the limits approved in the current AUC Approval.

WWPI and its representatives invite members of the public to attend the Open House and learn more about the Project including the proposed turbine types, Project schedule, results of assessments and updates on ongoing environmental studies.



Event coordinates

Location: Town Hall of Pincher Creek

Date: 27.Sept.2016

Time: 6pm - 8pm



Topics

Noise and Visual Impact
New layout of the wind farm



Participants

Elizabeth Fennell, ENERCON Canada Inc.
Hassan Shahriar, ENERCON Canada Inc.
Jeff Drain, Stantec



Project Contact and Information:

Project Email Address: welschwindfarm@enercon.de

Senior Commercial Manager: Hassan Shahriar
Phone Number: +1(416) 572-8912

Project Manager: Elizabeth Fennell
Phone Number: +1(514) 687-2586